

1 Check with your service provider for availability. Coverage is currently limited. Updates with broader coverage will be available in the future. For details on coverage areas visit www.blackberry8800.com. **2** The BlackBerry 8800 accepts microSD cards; the amount of storage is determined by card capacity. **3** All audio and video files must be transferred to the smartphone before playing. Files can be transferred via USB cable, smartphone browser application or Bluetooth®. For a complete list of supported media file formats visit www.blackberry8800.com. **4** Integrating corporate email accounts requires BlackBerry Mail Connector or the BlackBerry Enterprise Solution. Multiple email accounts only available with BlackBerry Internet Service. **5** Based on GSMA PRD TW.09 Battery Life Measurement Technique. Results may vary. Network availability and coverage affect battery life and are dependent upon a number of factors, including location and transmission environment. **6** Check with network for availability.

©2007 Research In Motion. The RIM and BlackBerry family of related marks, images and symbols are the exclusive properties of, and trademarks of, Research In Motion Limited. RIM, Research In Motion, and BlackBerry are registered with the U.S. Patent and Trademark Office and may be pending or registered in other countries. The Bluetooth word mark and logos are owned by Bluetooth SIG, Inc. and any use of such marks by Research In Motion Limited is under license. All other brands, product names, company names, trademarks and service marks are the properties of their respective owners. This document is provided "as is" and Research In Motion Limited and its affiliated companies ("RIM") assume no responsibility for any typographical, technical or other inaccuracies in this document. RIM reserves the right to periodically change information contained in this document. RIM makes no representations, warranties, conditions or covenants, either express or implied. Check with service provider for roaming arrangements, service plans and supported features and services. RIM makes no representation, warranty or guarantee and assumes no liability whatsoever in relation to third-party products and services. Prior to subscribing to or implementing any third-party products and services, it is your responsibility to ensure that the airtime service provider you are working with has agreed to support all of the features of the third-party products and services. Installation and use of third-party products and services with RIM's products and services may require one or more patent, trademark or copyright licenses in order to avoid infringement of the intellectual property rights of others. You are solely responsible for determining whether such third-party licenses are required and are responsible for acquiring any such licenses. To the extent that such intellectual property licenses may be required, RIM expressly recommends that you do not install or use these products and services until all such applicable licenses have been acquired by you or on your behalf. Your use of third-party software shall be governed by and subject to you agreeing to the terms of separate software licenses, if any, for those products or services. Any third-party products or services that are provided with RIM's products and services are provided "as is". RIM makes no representation, warranty or guarantee whatsoever in relation to the third-party products or services and RIM assumes no liability whatsoever in relation to the third-party products and services even if RIM has been advised of the possibility of such damages or can anticipate such damages.

BLACKBERRY 8800 GETTING STARTED



Business
Services

 BlackBerry.

CONTENTS

The following document provides essential information for getting started with your new BlackBerry® 8800 smartphone, including guidance on set-up and useful keyboard shortcuts. For more in-depth information, please download the full product user guide from www.blackberry.com.

GETTING STARTED	3
TOOLS FOR PEOPLE ON THE MOVE	6
BASIC FUNCTIONS	8
TIPS AND TRICKS	10
SPECIFICATIONS	14

GETTING STARTED

NEW BLACKBERRY USERS

Setting up for data

1. Please ensure that your SIM is enabled for BlackBerry® Internet Service by your network operator†.
2. Now insert the sim card and battery, and charge the device as follows:

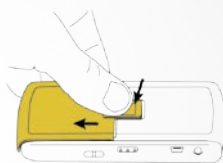


Figure 1. Remove the battery cover

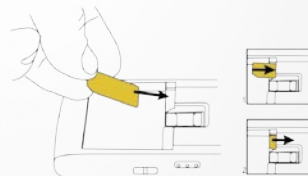


Figure 2. Insert the SIM card

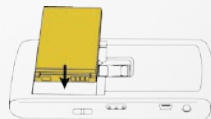


Figure 3. Insert the battery

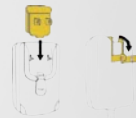
Charge the battery

- a) Connect the small end of the travel charger cable to the USB port on the side of your BlackBerry smartphone.
- b) If required, perform one of the following actions:
 - Insert the plug blade attachment into the power adapter.
 - Fold the plug blades down.
- c) Plug the power adapter into a power outlet.
- d) Charge the battery to full power.

Figure 4. Connect the BlackBerry® Travel Charger to your device

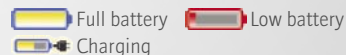


Figure 5. Insert plug attachment or fold down plug blades (if required)



If you have an available USB port on your computer, you can use the USB cable that came with your device to connect your device to your computer for charging.

Battery power level indicators



† Please check with your network provider for data transfer tariffs.

GETTING STARTED

Setting up your BlackBerry Internet Service account

3. Ensure that your handset is connected to the wireless network^{††}.
4. Select the 'Email Settings' icon from the homescreen of your BlackBerry smartphone, or select the 'Internet Browser' icon and enter the URL in the instructions provided with your handset.
5. Click 'Create New Account' and accept the terms and conditions.
6. Enter a memorable user name and a password (of your choosing) to complete the account set up.

Accessing your ISP email account

ISP or POP3 email accounts (e.g. Yahoo!®, Google Mail™, AOL®^{†††} etc.) can be made accessible via your BlackBerry smartphone as follows:

7. After completion of the steps above, simply enter the email address and password of your ISP account into the fields provided and select the 'Next' button.

The mailbox will be represented by a new mail icon on the device. Up to 10 such accounts can be created by repeating the steps above.

Managing the device from your PC or Mac

To upload media to your BlackBerry 8800 smartphone, recharge it using your computer via USB, and synchronise contacts information with your email platform, you will need to download and install 'BlackBerry® Desktop Manager v.4.2' (for PC) or 'Pocket Mac v.4.0' (for Mac users).

Both pieces of software are available free of charge from the following address:

<http://eu.blackberry.com/eng/services/desktop>

Set up of BlackBerry Enterprise Server email accounts

If your organisation already employs BlackBerry® Enterprise Server, pass your device to your IT administrator who will be able to configure it to receive work email.

^{††} GPRS, EDGE or UMTS will be displayed at the top of the screen of your handset (note: lowercase text or GSM indicates that your SIM may not be correctly set up by your network operator).

^{†††} Some ISPs may charge for access to their services, please check with your ISP.

EXISTING BLACKBERRY USERS

Swapping over from an old BlackBerry smartphone

Log in to your BlackBerry Internet Service account using the user ID and password created in the steps above, select the option to 'change handheld' and enter the PIN and IMEI of the new device; all previously set up email accounts will be re-routed to the new device.



TOOLS FOR PEOPLE ON THE MOVE

EXPANDABLE MEMORY

The BlackBerry 8800 smartphone supports microSD² cards so you can store pictures, music files, video and even use it to hold office documents if necessary.

GSM/GPRS/EDGE QUAD-BAND

This feature enables global roaming across high speed networks (where supported) without the need for you to change your settings or device.

SPEAKERPHONE

This built-in feature allows you to speak in safety whilst driving, or make conference calls.

64MB FLASH MEMORY

With this amount of memory, you can store all of your applications, contacts, emails and tasks.



VOICE DIALING

Just say a word and this function will call anyone in your contact list. You can also voice dial with a wired or Bluetooth[®] enabled headset, or via the speakerphone whilst driving.

LONGER LIFE BATTERY

The BlackBerry 8800 smartphone doesn't only work harder; with its 1400mAh battery, it also works longer. Meaning less of those all too frustrating 'zero battery' moments.

LARGE BRIGHT DISPLAY

The BlackBerry 8800 smartphone features a large, high-resolution screen with light-sensing technology that automatically adjusts to the ambient light, aiding viewing.

MULTI-MEDIA PLAYER³

The BlackBerry 8800 smartphone incorporates a multi-media player that allows you to listen to music while you go through your emails or watch videos on the move.

VIEW ATTACHMENTS

Easily open popular email file attachments including JPEGs, Adobe PDFs, Microsoft[®] Word, Excel and Powerpoint.

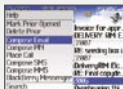
SYNCHRONISATION

The BlackBerry 8800 smartphone synchronises seamlessly with your desktop to allow access to your address book, calendar, tasks, memos and multiple email accounts⁴, including a unique BlackBerry one if you need an extra email account.

BASIC FUNCTIONS

COMPOSE AND SEND AN EMAIL

1. From the home screen, click the 'Messages' icon. The 'Messages' screen appears.
2. Click the trackball.
3. Click 'Compose Email'.
4. In the 'To:' field, type an email address or contact name.
5. Click the trackball.
6. Type a message.
7. Click the trackball.
8. Click 'Send'.



OPEN AN ATTACHMENT

1. Within a message, use the trackball to select the attachment (marked at the top and bottom of the message).
2. Click the trackball.
3. Click 'Open Attachment'.

PLACE A PHONE CALL

1. From the home screen, press the 'Send' key. The Phone screen appears.
2. Type the phone number or select a contact from the list.
3. Press the 'Send' key.



PLACE A CALL USING VOICE DIALLING

1. From the home screen, click the 'Voice Dialling' icon. The voice dialling screen appears.
2. When prompted, say "Call", followed by the name or phone number of the contact.
3. Your call is made.

SEND A PICTURE

1. From the home screen, click the 'Media' icon. The media screen appears.
2. Then click to 'Pictures' screen.
3. Select the picture.
 - Use the menu to send the picture.
 - Or in BlackBerry® Messenger mode, simply say "Send file".

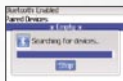
VIEW A MEDIA FILE STORED ON A MICROSD CARD

1. From the home screen, click the 'Media' icon. The media screen appears.
2. Then click to 'Pictures' screen.
3. Click 'Media Card'.
4. Click the file you want to open.



ACTIVATE BLUETOOTH

1. Ensure your Bluetooth device is in pairing mode. Then, from the home screen on the BlackBerry 8800 smartphone, click the 'Set up Bluetooth' icon. The Bluetooth Options screen appears.
2. To begin a Bluetooth inquiry, click 'OK' when prompted.



BROWSE TO A WEB PAGE

1. In the Browser, press the 'Menu' key.
2. Click 'Go To'.
3. Perform one of the following actions:
 - Type a web address, and press the 'Menu' key.



- Highlight a web address and press the 'Menu' key.
- Click 'Edit'. Change the web address.
- Press the 'Menu' key.

INSTANT MESSAGING

With BlackBerry Messenger, you can communicate in real-time with friends and colleagues using either Yahoo!® Messenger or Google Talk™.

For Yahoo!® Messenger, go to www.blackberry.com/yahoodownload to set up your device for Instant Messaging with Yahoo!®

For Google Talk™, go to www.blackberry.com/googletalk to set up your device for Instant Messaging with Google™.

BlackBerry Messenger works just like on your PC, so you can always know which contacts are on-line, set your own status, and add others to a conversation.

TIPS AND TRICKS

BLACKBERRY BASICS

Move the cursor

Roll trackball

Exit a screen or move back a page in the browser

Press Escape key

Move to a list item or menu item

Type first letter of the item

Select or clear a check box

Press Space key

Switch applications

Hold Alt key and press Escape key

Continue to hold Alt key and select application

Release Alt key

PHONE

Answer a call

Press Send key

Insert (+) into a phone number

Hold 0

Add an extension to a phone number

Press Alt key + X key and type the extension number

Assign a speed dial number to a key

On the Home screen or on the Phone screen, hold down key

Turn speakerphone on or off during a call

Press Speakerphone key

Type a letter in a phone number field

Press Alt key + the letter key

Check your voicemail

Hold 1

MESSAGES

WITHIN A MESSAGE

Reply to a message

Press R

Reply to all

Press L

Forward a message

Press F

File a highlighted email message

Press I

IN A MESSAGE LIST

Open a highlighted message

Press Enter key

Compose a message from a message list

Press C

Mark a message as opened or unopened

Press Alt key + U

View received messages

Press Alt key + I

View sent messages

Press Alt key + O

View voicemail messages

Press Alt key + V

View SMS text messages

Press Alt key + S

View call logs

Press Alt key + P

MOVING AROUND A MESSAGE LIST

Move up the screen

Press Shift key + Space key

Move down the screen

Press Space key

Move to the top of a message list

Press T

Move to the bottom of a message list

Press B

Move to the next date

Press N

Move to the previous date

Press P

Move to the next unopened item

Press U

TYPING

Insert a period

Press Space key twice – the next letter is capitalised

Capitalise a letter

Hold letter key until capitalised letter appears

Type an alternate character on a key

Hold Alt key and press character key

Type an accented or special character

Hold letter key and roll trackball left or right (For example, to type ü, hold U and roll the trackball to the left until ü appears)

Release letter key when accented or special character appears

Type a number in a password field

Hold Alt key and press a number key

Turn on NUM lock

Press Alt key + Left Shift key

Turn on CAP lock

Press Alt key + Right Shift key

Turn off NUM lock or CAP lock

Press Shift key

Switch typing input languages

On the Language screen, set Use Input Language Shortcut field to Yes

Hold Alt key and press Enter key

Highlight a language

Release Alt key

TIPS AND TRICKS

Insert a period or at sign (@) into an email address

Press Space key

Type a symbol

Press Symbol key and type the letter that appears below the symbol

Highlight a line of text

Press Shift key and roll trackball

Highlight text character by character

Hold Shift key and roll trackball left or right

Cancel a text selection

Press the Escape key

Cut highlighted text when typing

Press Shift key + Backspace/Delete key

Copy highlighted text when typing

Press Alt key and click trackball

Paste highlighted text when typing

Press Shift key and click trackball

SEARCH

Search for a contact in a list of contacts

Type the contact name or initials separated by a space

ATTACHMENTS

GENERAL TIPS

Move to the last cursor position after closing and reopening an attachment

Press G

IN A SPREADSHEET ATTACHMENT

View the content of a cell

Press Space key

Switch worksheets

Press V

Highlight a worksheet

Press Enter key

View hidden columns or rows

Press H

Hide the columns or rows again

Press H

IN A PRESENTATION ATTACHMENT

Move to the next slide

Press N

Move to the previous slide

Press P

Move to the last cursor position after closing and reopening a presentation attachment

Verify that you're viewing the presentation in text view or in text and slide view

Press G

BROWSER

GENERAL TIPS

Stop loading a web page

Press Escape key

Hide the browser

Press D

Close the browser

Hold Escape key

ON A WEB PAGE

Follow a highlighted link

Press Enter key

View a thumbnail version of a web page

Press X

To return to the normal view

Press any key

NAVIGATING WITHIN A WEB PAGE

Move up a screen

Press Shift key + Space key

Move down a screen

Press Space key

Move to the top of a web page

Press T

Move to the bottom of a web page

Press B

MEDIA PLAYER

Pause or resume playing a video or song

Press Mute key

Rotate a picture

Press R

Zoom in on a picture

Press I

Zoom out from a picture

Press O

BLACKBERRY® MAPS¹

Zoom in on a map

Press I

Zoom out from a map

Press O

SPECIFICATIONS

SIZE (LxWxD)

Approximately 4.5 x 2.6 x 0.55 inches
114mm x 66mm x 14mm

WEIGHT (BATTERY INCLUDED)

Approximately 4.73 oz (134g)

MEMORY

64 MB flash memory

EXPANDABLE MEMORY

MicroSD²

BATTERY

1400 mAh (removable/rechargeable lithium cell)

BATTERY LIFE⁵

Standby time: 528 hours (22 days)

TALK TIME⁵

300 minutes (5 hours)

DISPLAY

High resolution 320 x 240 landscape TFT colour display
Supports over 65,000 colors

KEYBOARD

35 key, backlit QWERTY keyboard

DEDICATED CONVENIENCE KEYS

Send key, End key, Mute key, Volume keys and a programmable key

NAVIGATION

Trackball, ESC key, Menu key

VOICE

Integrated earpiece and microphone, hands-free headset, integrated speakerphone

RINGTONES

Polyphonic MIDI, MP3

GPS

GPS enabled and preloaded with BlackBerry Maps¹ application

MEDIA PLAYER

Supported audio formats: MP3, MIDI, AMR-NB, AAC/AAC+/eAAC+, WMA

SUPPORTED VIDEO FORMATS

MPEG4 Part 2 Simple Profile, H.263, WMV

BLUETOOTH[®]

Bluetooth[®] v2.0; headset, hands-free and serial port profiles supported

HEADSET

Stereo headset capable

USB PORTS

Enables charging and data synchronisation via USB

POWER ADAPTER

+5V DC /500 mA AC power adapter with interchangeable, region-specific plugs

MODEM

Embedded wireless modem, plus tethered modem support for EDGE

NETWORK SUPPORT

Quad-Band 850 / 900 / 1800 / 1900 Mhz GSM/GPRS and EDGE networks

DESKTOP SOFTWARE

Synchronizes calendar, address book, tasks and memos between your smartphone and desktop

HANDHELD SECURITY

Password protection and keyboard lock

When used with BlackBerry[®] Enterprise Solution, the BlackBerry 8800 smartphone supports: AES or Triple DES encryption, local AES encryption, password protection and wireless IT commands for remotely locking or deleting data on lost or stolen smartphones.

COMPATIBILITY

Instant Messaging:⁶

The BlackBerry 8800 smartphone supports Yahoo![®] Messenger and Google Talk[™].

When used with the BlackBerry Enterprise Solution, the BlackBerry 8800 smartphone also supports IBM Lotus Sametime, Microsoft[®] Windows Messenger and Novell[®] GroupWise[®] Messenger.

BlackBerry Messenger:

Exchange text messages in real-time with other BlackBerry users – perfect when you need quick answers. Visit www.blackberry.com/messenger to find out more.